

# Fuse modular terminal block - UK 5-HESI



3004100

<https://www.phoenixcontact.com/us/products/3004100>

Please be informed that the data shown in this PDF document is generated from our Online Catalog. Please find the complete data in the user documentation. Our General Terms of Use for Downloads are valid.

---



Fuse modular terminal block, fuse type: Glass / ceramics / ..., fuse type: G / 5 x 20 / 5 x 25 / 5 x 30, nom. voltage: 800 V, nominal current: 6.3 A, number of positions: 1, connection method: Screw connection, Rated cross section: 1 mm<sup>2</sup>, cross section: 0.2 mm<sup>2</sup>- 4 mm<sup>2</sup>, mounting type: NS 35/7,5, NS 35/15, NS 32, color: black

---

## Your advantages

- Versions with LED
- Large-surface marking
- Safety lever locked in end position

# Fuse modular terminal block - UK 5-HESI



3004100

<https://www.phoenixcontact.com/us/products/3004100>

## Commercial Data

Item number	3004100
Packing unit	1 pc
Minimum order quantity	1 pc
Sales Key	B01
Product Key	BE1234
Catalog Page	Page 492 (C-1-2019)
GTIN	4017918090623
Weight per Piece (including packing)	18.346 g
Weight per Piece (excluding packing)	16 g
Customs tariff number	85369095
Country of origin	TR

# Fuse modular terminal block - UK 5-HESI



3004100

<https://www.phoenixcontact.com/us/products/3004100>

## Technical Data

### Notes

Note regarding marking	For terminal marking, please use marking material with 8.2 mm pitch.
Note regarding marking	For lever marking, please use marking material with 6.2 mm pitch.

### Product properties

Product type	Fuse terminal block
Number of positions	1
Number of connections	2
Number of rows	1
Potentials	1

### Insulation characteristics

Overvoltage category	III
Degree of pollution	3

### Electrical properties

Fuse type	Glass / ceramics / ...
Rated surge voltage	8 kV
Maximum power dissipation for nominal condition	1.02 W
Fuse	G / 5 x 20 / 5 x 25 / 5 x 30

### Connection data

Number of connections per level	2
Nominal cross section	4 mm <sup>2</sup>

### Level 1 above 1 below 1

Screw thread	M3
Tightening torque	0.6 ... 0.8 Nm
Stripping length	8 mm
Internal cylindrical gage	A4
Connection in acc. with standard	IEC 60947-7-3
Conductor cross section solid	0.2 mm <sup>2</sup> ... 4 mm <sup>2</sup>
Cross section AWG	24 ... 12
Conductor cross section flexible	0.2 mm <sup>2</sup> ... 4 mm <sup>2</sup>
Conductor cross section, flexible [AWG]	24 ... 12
Flexible conductor cross section flexible (ferrule, w/o plastic sleeve)	0.25 mm <sup>2</sup> ... 4 mm <sup>2</sup>
Flexible conductor cross section (ferrule with plastic sleeve)	0.25 mm <sup>2</sup> ... 4 mm <sup>2</sup>
Cross-section with insertion bridge, rigid	4 mm <sup>2</sup>
Cross-section with insertion bridge, flexible	4 mm <sup>2</sup>
2 conductors with same cross section, solid	0.2 mm <sup>2</sup> ... 1.5 mm <sup>2</sup>

# Fuse modular terminal block - UK 5-HESI



3004100

<https://www.phoenixcontact.com/us/products/3004100>

2 conductors with same cross section, flexible	0.2 mm² ... 1.5 mm²
2 conductors with same cross section, flexible, with ferrule without plastic sleeve	0.25 mm² ... 1.5 mm²
2 conductors with the same cross section, flexible, with TWIN ferrule with plastic sleeve	0.5 mm² ... 1.5 mm²
Nominal current	6.3 A
Maximum load current	6.3 A (the current is determined by the fuse used)
Nominal voltage	800 V (As a fuse terminal block)
Nominal cross section	1 mm²
Connection in acc. with standard	IEC 60947-7-3
Conductor cross section solid	0.2 mm² ... 4 mm²
Cross section AWG	24 ... 12
Conductor cross section flexible	0.2 mm² ... 4 mm²
Flexible conductor cross section flexible (ferrule, w/o plastic sleeve)	0.25 mm² ... 4 mm²
Flexible conductor cross section (ferrule with plastic sleeve)	0.25 mm² ... 4 mm²
Cross-section with insertion bridge, rigid	4 mm²
Cross-section with insertion bridge, flexible	4 mm²
2 conductors with same cross section, solid	0.2 mm² ... 1.5 mm²
2 conductors with same cross section, flexible	0.2 mm² ... 1.5 mm²
2 conductors with same cross section, flexible, with ferrule without plastic sleeve	0.25 mm² ... 1.5 mm²
2 conductors with the same cross section, flexible, with TWIN ferrule with plastic sleeve	0.5 mm² ... 1.5 mm²
Nominal current	6.3 A
Maximum load current	6.3 A
Nominal voltage	800 V (As a disconnect terminal block)
Nominal cross section	1 mm²

## Dimensions

Width	8.2 mm
Height NS 35/15	64 mm
Height NS 35/7,5	56.5 mm
Height	2.224 "
Height NS 32	61.5 mm
Length	72.5 mm

## Material specifications

Color	black
Flammability rating according to UL 94	V0
Insulating material group	I
Insulating material	PA
Static insulating material application in cold	-60 °C
Temperature index of insulation material (DIN EN 60216-1 (VDE 0304-21))	125 °C
Relative insulation material temperature index (Elec., UL 746 B)	130 °C

# Fuse modular terminal block - UK 5-HESI



3004100

<https://www.phoenixcontact.com/us/products/3004100>

Fire protection for rail vehicles (DIN EN 45545-2) R22	HL 1 - HL 3
Fire protection for rail vehicles (DIN EN 45545-2) R23	HL 1 - HL 3
Fire protection for rail vehicles (DIN EN 45545-2) R24	HL 1 - HL 3
Fire protection for rail vehicles (DIN EN 45545-2) R26	HL 1 - HL 3
Calorimetric heat release NFPA 130 (ASTM E 1354)	27,5 MJ/kg
Surface flammability NFPA 130 (ASTM E 162)	passed
Specific optical density of smoke NFPA 130 (ASTM E 662)	passed
Smoke gas toxicity NFPA 130 (SMP 800C)	passed

## Mechanical properties

### Mechanical data

Open side panel	No
-----------------	----

## Environmental and real-life conditions

### Oscillation/broadband noise

Specification	DIN EN 50155 (VDE 0115-200):2008-03
Spectrum	Service life test category 1, class B, body mounted
Frequency	$f_1 = 5 \text{ Hz}$ to $f_2 = 150 \text{ Hz}$
ASD level	$1.857 \text{ (m/s}^2\text{)}^2\text{/Hz}$
Acceleration	0.8g
Test duration per axis	5 h
Test directions	X-, Y- and Z-axis
Result	Test passed

### Shocks

Specification	DIN EN 50155 (VDE 0115-200):2008-03
Pulse shape	Half-sine
Acceleration	5g
Shock duration	30 ms
Number of shocks per direction	3
Test directions	X-, Y- and Z-axis (pos. and neg.)
Result	Test passed

### Ambient conditions

Ambient temperature (operation)	-60 °C ... 105 °C (max. short-term operating temperature RTI Elec.)
Ambient temperature (storage/transport)	-25 °C ... 60 °C (for a short time, not exceeding 24 h, -60 °C to +70 °C)
Ambient temperature (assembly)	-5 °C ... 70 °C
Ambient temperature (actuation)	-5 °C ... 70 °C
Permissible humidity (storage/transport)	30 % ... 70 %

## Standards and regulations

Connection in acc. with standard	IEC 60947-7-3
	IEC 60947-7-3

# Fuse modular terminal block - UK 5-HESI



3004100

<https://www.phoenixcontact.com/us/products/3004100>

## Mounting

Mounting type	NS 35/7,5
	NS 35/15
	NS 32

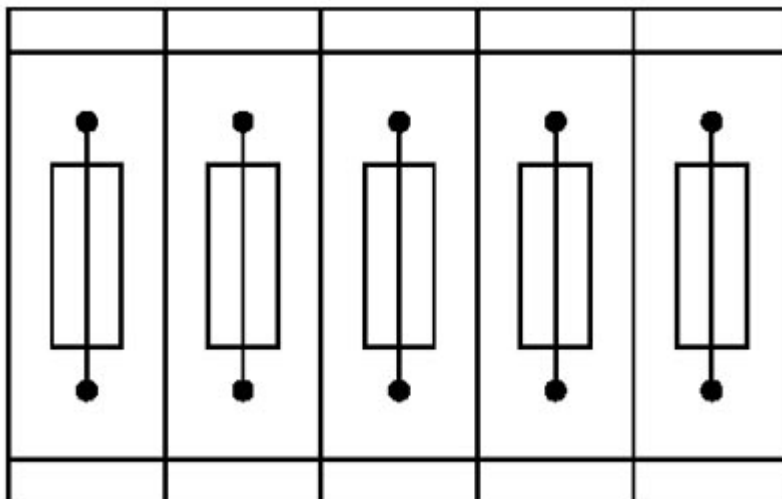
# Fuse modular terminal block - UK 5-HESI

3004100

<https://www.phoenixcontact.com/us/products/3004100>

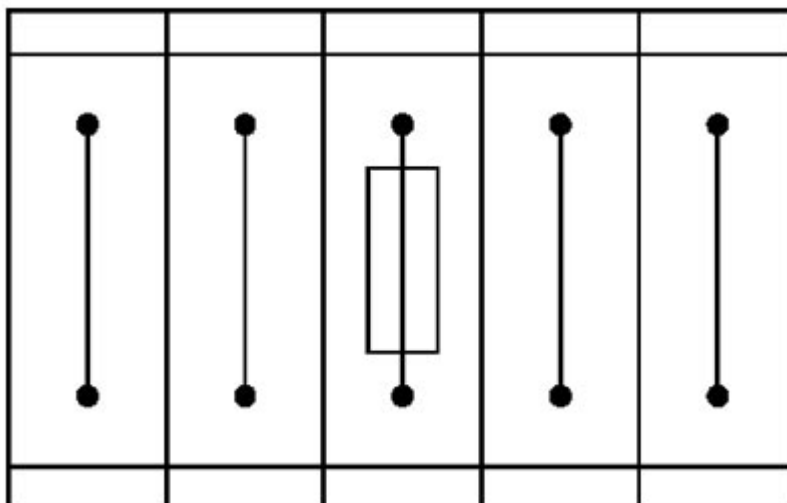
## Drawings

Application drawing



Fuse terminal blocks in interconnected arrangement,  
block consisting of 5 fuse terminal blocks

Application drawing



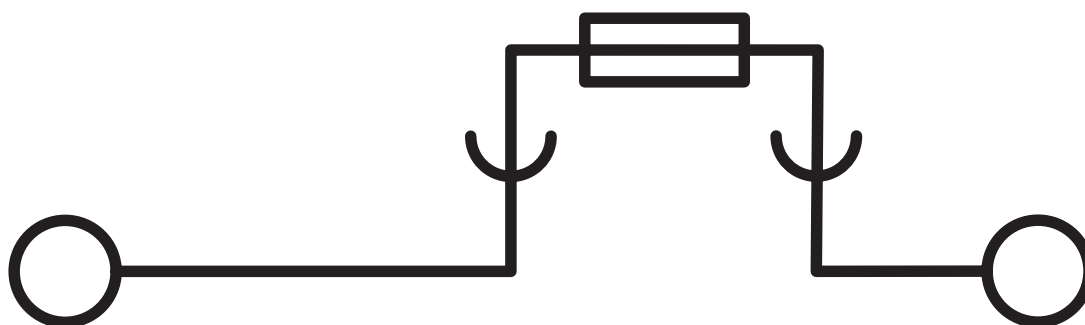
Fuse terminal block in single arrangement,  
block consisting of one fuse terminal block and 4 feed-through terminal blocks

# Fuse modular terminal block - UK 5-HESI

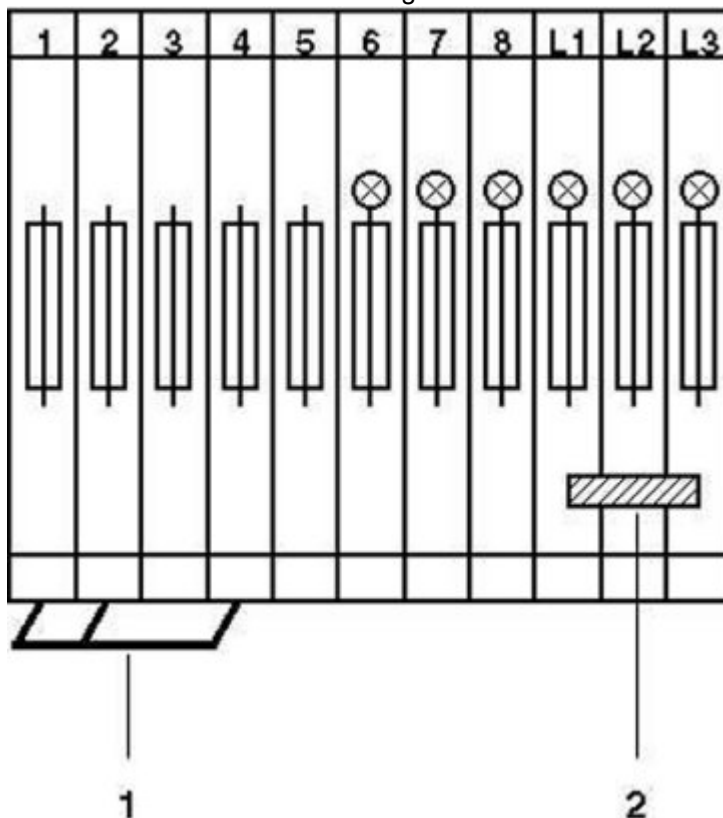
3004100

<https://www.phoenixcontact.com/us/products/3004100>

Circuit diagram



Circuit diagram



1 = insertion bridge  
2 = fixed bridge




# Fuse modular terminal block - UK 5-HESI




3004100


<https://www.phoenixcontact.com/us/products/3004100>

## Approvals

 <b>CSA</b> Approval ID: 13631				
	Nominal Voltage $U_N$	Nominal Current $I_N$	Cross Section AWG	Cross Section $\text{mm}^2$
Use group B				
	600 V	6.3 A	28 - 10	-
Use group C				
	600 V	6.3 A	28 - 10	-

 <b>EAC</b> Approval ID: RU C-DE.BL08.B.00534				
---	--	--	--	--

 <b>RS</b> Approval ID: 17.00013.272				
--	--	--	--	--

 <b>cULus Recognized</b> Approval ID: E60425				
	Nominal Voltage $U_N$	Nominal Current $I_N$	Cross Section AWG	Cross Section $\text{mm}^2$
Use group B				
	600 V	12 A	26 - 10	-
Use group C				
	600 V	12 A	26 - 10	-
Use group F				
	600 V	12 A	26 - 10	-

# Fuse modular terminal block - UK 5-HESI



3004100

<https://www.phoenixcontact.com/us/products/3004100>

## Classifications

### ECLASS

ECLASS-9.0	27141116
ECLASS-10.0.1	27141116
ECLASS-11.0	27141116

### ETIM

ETIM 8.0	EC000899
----------	----------

### UNSPSC

UNSPSC 21.0	39121400
-------------	----------

# Fuse modular terminal block - UK 5-HESI



3004100

<https://www.phoenixcontact.com/us/products/3004100>

## Environmental Product Compliance

China RoHS	Environmentally friendly use period: unlimited = EFUP-e
	No hazardous substances above threshold values

# Fuse modular terminal block - UK 5-HESI



3004100

<https://www.phoenixcontact.com/us/products/3004100>

## Accessories



Note: Applying some accessories below might limit this product.

### Screwdriver

Screwdriver - SZS 0,6X3,5 - 1205053

<https://www.phoenixcontact.com/us/products/1205053>



Actuation tool, for ST terminal blocks, insulated, also suitable for use as a bladed screwdriver, size: 0.6 x 3.5 x 100 mm, 2-component grip, with non-slip grip

### End clamp

End clamp - CLIPFIX 35 - 3022218

<https://www.phoenixcontact.com/us/products/3022218>



Quick mounting end clamp for NS 35/7,5 DIN rail or NS 35/15 DIN rail, with marking option, width: 9.5 mm, color: gray

# Fuse modular terminal block - UK 5-HESI

3004100

<https://www.phoenixcontact.com/us/products/3004100>

## End clamp

End clamp - CLIPFIX 35-5 - 3022276

<https://www.phoenixcontact.com/us/products/3022276>



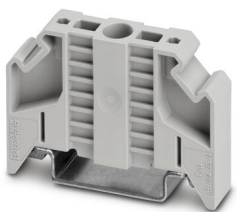
Quick mounting end clamp for NS 35/7,5 DIN rail or NS 35/15 DIN rail, with marking option, with parking option for FBS...5, FBS...6, KSS 5, KSS 6, width: 5.15 mm, color: gray

---

## End clamp

End clamp - E/NS 35 N - 0800886

<https://www.phoenixcontact.com/us/products/0800886>



End clamp, width: 9.5 mm, color: gray

# Fuse modular terminal block - UK 5-HESI



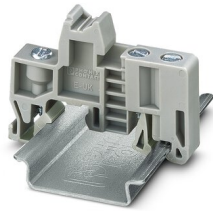
3004100

<https://www.phoenixcontact.com/us/products/3004100>

## End clamp

End clamp - E/UK - 1201442

<https://www.phoenixcontact.com/us/products/1201442>



End clamp, material: PA, color: gray, Mounting on a DIN rail NS 32 or NS 35

---

## End clamp

End clamp - E/UK 1 - 1201413

<https://www.phoenixcontact.com/us/products/1201413>



End clamps, for supporting the ends of double-level and three-level terminal blocks, width: 10 mm, color: gray

# Fuse modular terminal block - UK 5-HESI

3004100

<https://www.phoenixcontact.com/us/products/3004100>

## End cap

End cap - NS 35/ 7,5 CAP - 1206560

<https://www.phoenixcontact.com/us/products/1206560>

DIN rail end piece, for DIN rail NS 35/7.5



---

## End cap

End cap - NS 35/15 CAP - 1206573

<https://www.phoenixcontact.com/us/products/1206573>

DIN rail end piece, for DIN rail NS 35/15



# Fuse modular terminal block - UK 5-HESI

3004100

<https://www.phoenixcontact.com/us/products/3004100>

## Light indicator

Light indicator - UK 5-HESI LEUCHTANZEIGE 24 - 2202220

<https://www.phoenixcontact.com/us/products/2202220>



Light indicator, color: transparent

---

## Light indicator

Light indicator - UK 5-HESI LEUCHTANZEIGE 250 - 2204231

<https://www.phoenixcontact.com/us/products/2204231>



Light indicator, color: transparent



# Fuse modular terminal block - UK 5-HESI



3004100

<https://www.phoenixcontact.com/us/products/3004100>

## DIN rail, unperforated

DIN rail, unperforated - NS 32 UNPERF 2000MM-VPE 10 - 1201015

<https://www.phoenixcontact.com/us/products/1201015>



DIN rail, unperforated, acc. to EN 60715, material: Steel, galvanized, passivated with a thick layer, G profile, color: silver, Pack of 10 (20 m)

---

## DIN rail, unperforated

DIN rail, unperforated - NS 35/ 7,5 UNPERF 2000MM - 0801681

<https://www.phoenixcontact.com/us/products/0801681>



DIN rail, unperforated, acc. to EN 60715, material: Steel, galvanized, passivated with a thick layer, Standard profile, color: silver, Pack of 25 (50 m)

# Fuse modular terminal block - UK 5-HESI



3004100

<https://www.phoenixcontact.com/us/products/3004100>

## DIN rail, unperforated

DIN rail, unperforated - NS 35/ 7,5 WH UNPERF 2000MM-VPE 10 - 1204122

<https://www.phoenixcontact.com/us/products/1204122>



DIN rail, unperforated, acc. to EN 60715, material: Steel, Galvanized, white passivated, Standard profile, color: silver, Pack of 10 (20 m)

---

## DIN rail, unperforated

DIN rail, unperforated - NS 35/ 7,5 AL UNPERF 2000MM - 0801704

<https://www.phoenixcontact.com/us/products/0801704>



DIN rail, unperforated, acc. to EN 60715, material: Aluminum, uncoated, Standard profile, color: silver, Pack of 25 (50 m)

# Fuse modular terminal block - UK 5-HESI

3004100

<https://www.phoenixcontact.com/us/products/3004100>

## DIN rail, unperforated

DIN rail, unperforated - NS 35/ 7,5 ZN UNPERF 2000MM - 1206434

<https://www.phoenixcontact.com/us/products/1206434>



DIN rail, unperforated, acc. to EN 60715, material: Steel, galvanized, Standard profile, color: silver, Pack of 25 (50 m)

---

## DIN rail, unperforated

DIN rail, unperforated - NS 35/ 7,5 CU UNPERF 2000MM-VPE 10 - 0801762

<https://www.phoenixcontact.com/us/products/0801762>



DIN rail, unperforated, acc. to EN 60715, material: Copper, uncoated, Standard profile, color: copper-colored, Pack of 10 (20 m)

# Fuse modular terminal block - UK 5-HESI



3004100

<https://www.phoenixcontact.com/us/products/3004100>

## DIN rail, unperforated

DIN rail, unperforated - NS 35/15 UNPERF 2000MM - 1201714

<https://www.phoenixcontact.com/us/products/1201714>



DIN rail, unperforated, similar to EN 60715, material: Steel, galvanized, passivated with a thick layer, Standard profile, color: silver, Pack of 25 (50 m)

---

## DIN rail, unperforated

DIN rail, unperforated - NS 35/15 WH UNPERF 2000MM-VPE 10 - 1204135

<https://www.phoenixcontact.com/us/products/1204135>



DIN rail, unperforated, similar to EN 60715, material: Steel, Galvanized, white passivated, Standard profile, color: silver, Pack of 10 (20 m)

# Fuse modular terminal block - UK 5-HESI



3004100

<https://www.phoenixcontact.com/us/products/3004100>

## DIN rail, unperforated

DIN rail, unperforated - NS 35/15 AL UNPERF 2000MM - 1201756

<https://www.phoenixcontact.com/us/products/1201756>



DIN rail, unperforated, similar to EN 60715, material: Aluminum, uncoated, Standard profile, color: silver

---

## DIN rail, unperforated

DIN rail, unperforated - NS 35/15 ZN UNPERF 2000MM - 1206586

<https://www.phoenixcontact.com/us/products/1206586>



DIN rail, unperforated, similar to EN 60715, material: Steel, galvanized, Standard profile, color: silver, Pack of 25 (50 m)

# Fuse modular terminal block - UK 5-HESI



3004100

<https://www.phoenixcontact.com/us/products/3004100>

## DIN rail, unperforated

DIN rail, unperforated - NS 35/15 CU UNPERF 2000MM-VPE 10 - 1201895

<https://www.phoenixcontact.com/us/products/1201895>



DIN rail, unperforated, similar to EN 60715, material: Copper, uncoated, Standard profile, color: copper-colored, Pack of 10 (20 m)

---

## DIN rail, unperforated

DIN rail, unperforated - NS 35/15-2,3 UNPERF 2000MM-VPE 10 - 1201798

<https://www.phoenixcontact.com/us/products/1201798>



DIN rail, unperforated, acc. to EN 60715, material: Steel, galvanized, passivated with a thick layer, Standard profile 2.3 mm, color: silver, Pack of 10 (20 m)

# Fuse modular terminal block - UK 5-HESI



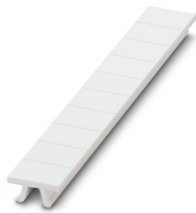
3004100

<https://www.phoenixcontact.com/us/products/3004100>

## Zack marker strip

Zack marker strip - ZB 8:UNBEDRUCKT - 1052002

<https://www.phoenixcontact.com/us/products/1052002>



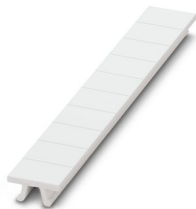
Zack marker strip, Strip, white, unlabeled, can be labeled with: CMS-P1-PLOTTER, PLOTMARK, mounting type: snap in, for terminal block width: 8.2 mm, lettering field size: 10.5 x 8.15 mm, Number of individual labels: 10

---

## Zack marker strip

Zack marker strip - ZB 8 CUS - 0825011

<https://www.phoenixcontact.com/us/products/0825011>



Zack marker strip, can be ordered: Strip, white, labeled according to customer specifications, mounting type: snap into tall marker groove, for terminal block width: 8.2 mm, lettering field size: 10.5 x 8.15 mm, Number of individual labels: 10

# Fuse modular terminal block - UK 5-HESI

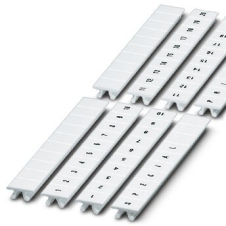
3004100

<https://www.phoenixcontact.com/us/products/3004100>

## Zack marker strip

Zack marker strip - ZB 8,LGS:FORTL.ZAHLEN - 1052015

<https://www.phoenixcontact.com/us/products/1052015>



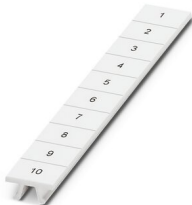
Zack marker strip, Strip, white, labeled, can be labeled with: CMS-P1-PLOTTER, printed horizontally: consecutive numbers 1 ... 10, 11 ... 20, etc. up to 91 ... 100, mounting type: snap into tall marker groove, for terminal block width: 8.2 mm, lettering field size: 10.5 x 8.15 mm, Number of individual labels: 10

---

## Zack marker strip

Zack marker strip - ZB 8,QR:FORTL.ZAHLEN - 1052028

<https://www.phoenixcontact.com/us/products/1052028>



Zack marker strip, Strip, white, labeled, can be labeled with: CMS-P1-PLOTTER, Printed vertically: consecutive numbers 1 ... 10, 11 ... 20, etc. up to 91 ... 100, mounting type: snap into tall marker groove, for terminal block width: 8.2 mm, lettering field size: 10.5 x 8.15 mm, Number of individual labels: 10



# Fuse modular terminal block - UK 5-HESI



3004100

<https://www.phoenixcontact.com/us/products/3004100>

## DIN rail perforated

DIN rail perforated - NS 32 PERF 2000MM-VPE 10 - 1201002

<https://www.phoenixcontact.com/us/products/1201002>



DIN rail perforated, acc. to EN 60715, material: Steel, galvanized, passivated with a thick layer, G profile, color: silver, Pack of 10 (20 m)

---

## DIN rail perforated

DIN rail perforated - NS 35/ 7,5 PERF 2000MM - 0801733

<https://www.phoenixcontact.com/us/products/0801733>



DIN rail perforated, acc. to EN 60715, material: Steel, galvanized, passivated with a thick layer, Standard profile, color: silver, Pack of 25 (50 m)

# Fuse modular terminal block - UK 5-HESI



3004100

<https://www.phoenixcontact.com/us/products/3004100>

## DIN rail perforated

DIN rail perforated - NS 35/ 7,5 WH PERF 2000MM - 1204119

<https://www.phoenixcontact.com/us/products/1204119>



DIN rail perforated, acc. to EN 60715, material: Steel, Galvanized, white passivated, Standard profile, color: silver, Pack of 25 (50 m)

---

## DIN rail perforated

DIN rail perforated - NS 35/ 7,5 ZN PERF 2000MM - 1206421

<https://www.phoenixcontact.com/us/products/1206421>



DIN rail perforated, acc. to EN 60715, material: Steel, galvanized, Standard profile, color: silver, Pack of 25 (50 m)

# Fuse modular terminal block - UK 5-HESI



3004100

<https://www.phoenixcontact.com/us/products/3004100>

## DIN rail perforated

DIN rail perforated - NS 35/15 PERF 2000MM - 1201730

<https://www.phoenixcontact.com/us/products/1201730>



DIN rail perforated, similar to EN 60715, material: Steel, galvanized, passivated with a thick layer, Standard profile, color: silver, Pack of 25 (50 m)

---

## DIN rail perforated

DIN rail perforated - NS 35/15 WH PERF 2000MM - 0806602

<https://www.phoenixcontact.com/us/products/0806602>



DIN rail perforated, similar to EN 60715, material: Steel, Galvanized, white passivated, Standard profile, color: white, Pack of 25 (50 m)

# Fuse modular terminal block - UK 5-HESI



3004100

<https://www.phoenixcontact.com/us/products/3004100>

## DIN rail perforated

DIN rail perforated - NS 35/15 ZN PERF 2000MM - 1206599

<https://www.phoenixcontact.com/us/products/1206599>



DIN rail perforated, similar to EN 60715, material: Steel, galvanized, Standard profile, color: silver, Pack of 25 (50 m)

---

## Marker for terminal blocks

Marker for terminal blocks - UC-TM 8 - 0818072

<https://www.phoenixcontact.com/us/products/0818072>



Marker for terminal blocks, Sheet, white, unlabeled, can be labeled with: BLUEMARK ID COLOR, BLUEMARK ID, BLUEMARK CLED, PLOTMARK, CMS-P1-PLOTTER, mounting type: snap in, for terminal block width: 8.2 mm, lettering field size: 7.6 x 10.5 mm, Number of individual labels: 56

# Fuse modular terminal block - UK 5-HESI

3004100

<https://www.phoenixcontact.com/us/products/3004100>

## Marker for terminal blocks

Marker for terminal blocks - UC-TM 8 CUS - 0824597

<https://www.phoenixcontact.com/us/products/0824597>



Marker for terminal blocks, can be ordered: by sheet, white, labeled according to customer specifications, mounting type: snap into tall marker groove, for terminal block width: 8.2 mm, lettering field size: 7.6 x 10.5 mm, Number of individual labels: 56

---

## Marker for terminal blocks

Marker for terminal blocks - UCT-TM 8 - 0828740

<https://www.phoenixcontact.com/us/products/0828740>



Marker for terminal blocks, Sheet, white, unlabeled, can be labeled with: TOPMARK NEO, TOPMARK LASER, BLUEMARK ID COLOR, BLUEMARK ID, BLUEMARK CLED, THERMOMARK PRIME, THERMOMARK CARD 2.0, THERMOMARK CARD, mounting type: snap in, for terminal block width: 8.2 mm, lettering field size: 7.6 x 10.5 mm, Number of individual labels: 42

# Fuse modular terminal block - UK 5-HESI

3004100

<https://www.phoenixcontact.com/us/products/3004100>

## Marker for terminal blocks

Marker for terminal blocks - UCT-TM 8 CUS - 0829616

<https://www.phoenixcontact.com/us/products/0829616>



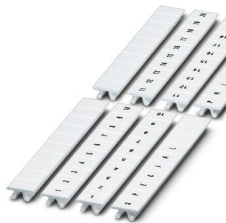
Marker for terminal blocks, can be ordered: by sheet, white, labeled according to customer specifications, mounting type: snap into tall marker groove, for terminal block width: 8.2 mm, lettering field size: 7.6 x 10.5 mm, Number of individual labels: 42

---

## Marker for terminal blocks

Marker for terminal blocks - ZB 8,LGS:L1-N,PE - 1052413

<https://www.phoenixcontact.com/us/products/1052413>



Marker for terminal blocks, Strip, white, labeled, can be labeled with: CMS-P1-PLOTTER, horizontal: L1, L2, L3, N, PE, L1, L2, L3, N, PE, mounting type: snap into tall marker groove, for terminal block width: 8.2 mm, lettering field size: 10.5 x 8.15 mm, Number of individual labels: 10

# Fuse modular terminal block - UK 5-HESI

3004100

<https://www.phoenixcontact.com/us/products/3004100>

## Insertion bridge

Insertion bridge - EBS 2- 8 - 3118151

<https://www.phoenixcontact.com/us/products/3118151>

Insertion bridge, pitch: 8 mm, color: gray



 Max. current carrying capacity: 32 A

---


## Insertion bridge

Insertion bridge - EBS 3- 8 - 3118148

<https://www.phoenixcontact.com/us/products/3118148>

Insertion bridge, pitch: 8 mm, color: gray



 Max. current carrying capacity: 32 A

# Fuse modular terminal block - UK 5-HESI

3004100

<https://www.phoenixcontact.com/us/products/3004100>

## Insertion bridge

Insertion bridge - EBS 10- 8 - 3118135

<https://www.phoenixcontact.com/us/products/3118135>



Insertion bridge, pitch: 8 mm, color: gray

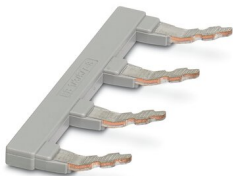
 Max. current carrying capacity: 32 A

---


## Insertion bridge

Insertion bridge - EB 1/3/5/7-8 - 3072340

<https://www.phoenixcontact.com/us/products/3072340>



Insertion bridge, pitch: 16.4 mm, pin assignment: 1, 3, 5, 7, color: gray

 Max. current carrying capacity: 57 A



# Fuse modular terminal block - UK 5-HESI



3004100

<https://www.phoenixcontact.com/us/products/3004100>

## Insertion bridge

Insertion bridge - EB 1/3/5-8 - 3072341

<https://www.phoenixcontact.com/us/products/3072341>

Insertion bridge, pitch: 16.4 mm, pin assignment: 1,3,5, color: gray



 Max. current carrying capacity: 57 A

---

## Feed-through connector

Feed-through connector - UK 5-HESI DM - 5023901

<https://www.phoenixcontact.com/us/products/5023901>



Feed-through metal in the form of a cartridge fuse insert 5 x 30 mm for use in UK 5-HESI fuse terminal blocks.

---

Phoenix Contact 2022 © - all rights reserved

<https://www.phoenixcontact.com>

Phoenix Contact USA  
586 Fulling Mill Road  
Middletown, PA 17057, United States  
(+717) 944-1300  
[info@phoenixcon.com](mailto:info@phoenixcon.com)